



# What Do I Have To Do To Prove My Love To You

Marva Whitney

Vinyl, 7", 45 RPM, Single (1968)

Bass: Charles "Sweet" Sherrill

Transcription: Gaetano Ferrara

♩ = 124 BPM

Intro

Chorus 1

E $\flat$ 9

4

6

10

14

16

Chorus 2

19

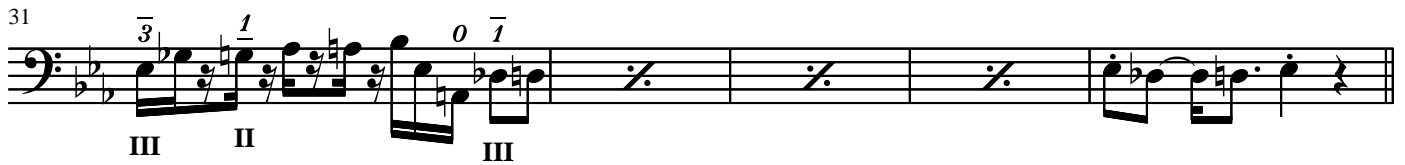
23



27



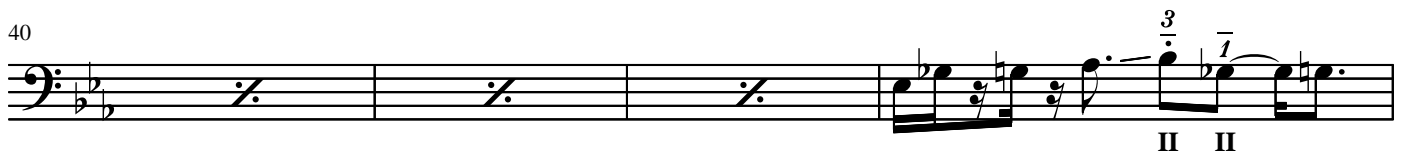
31



Chorus 3 & 4



40



44



48



Sax Solo

